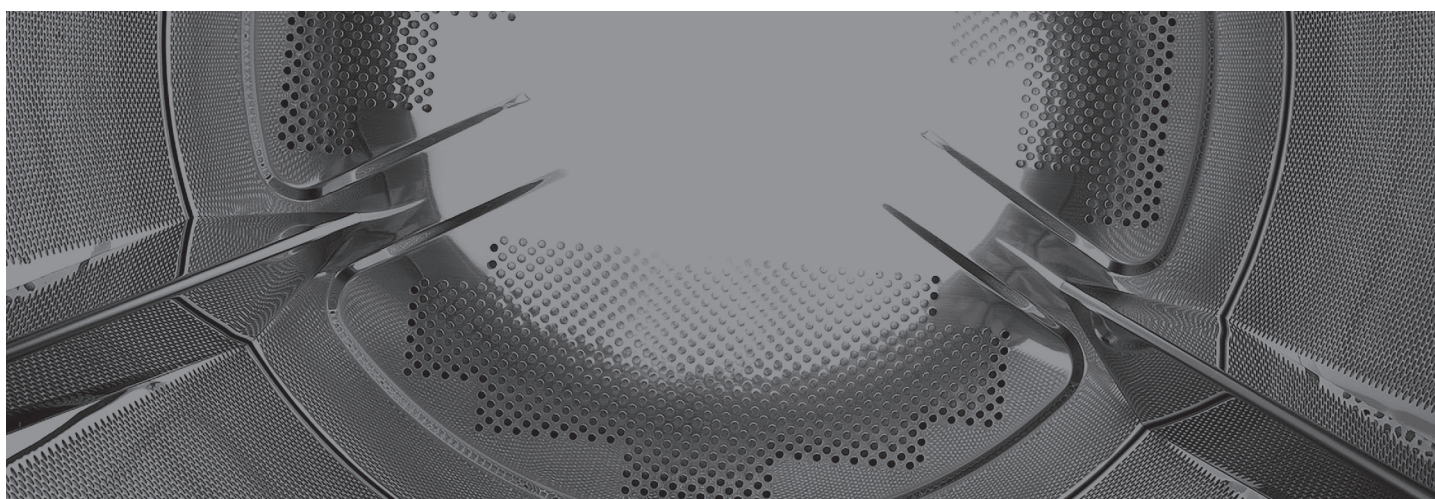




PROFESSIONAL
LAUNDRY | COMPACT
SERIES



A NEW CONCEPT OF LAUNDRY
PROFESSIONAL LAUNDRY - COMPACT SERIES



COMPACT
series

INDEX

MUCH MORE THAN
PROFESSIONAL LAUNDRY

04

THE BEST ANSWER TO
EVERY ONE OF YOUR NEEDS

06

WASHING MACHINES

08

TUMBLE DRYERS

20

COMPACT series

MUCH MORE THAN PROFESSIONAL LAUNDRY.

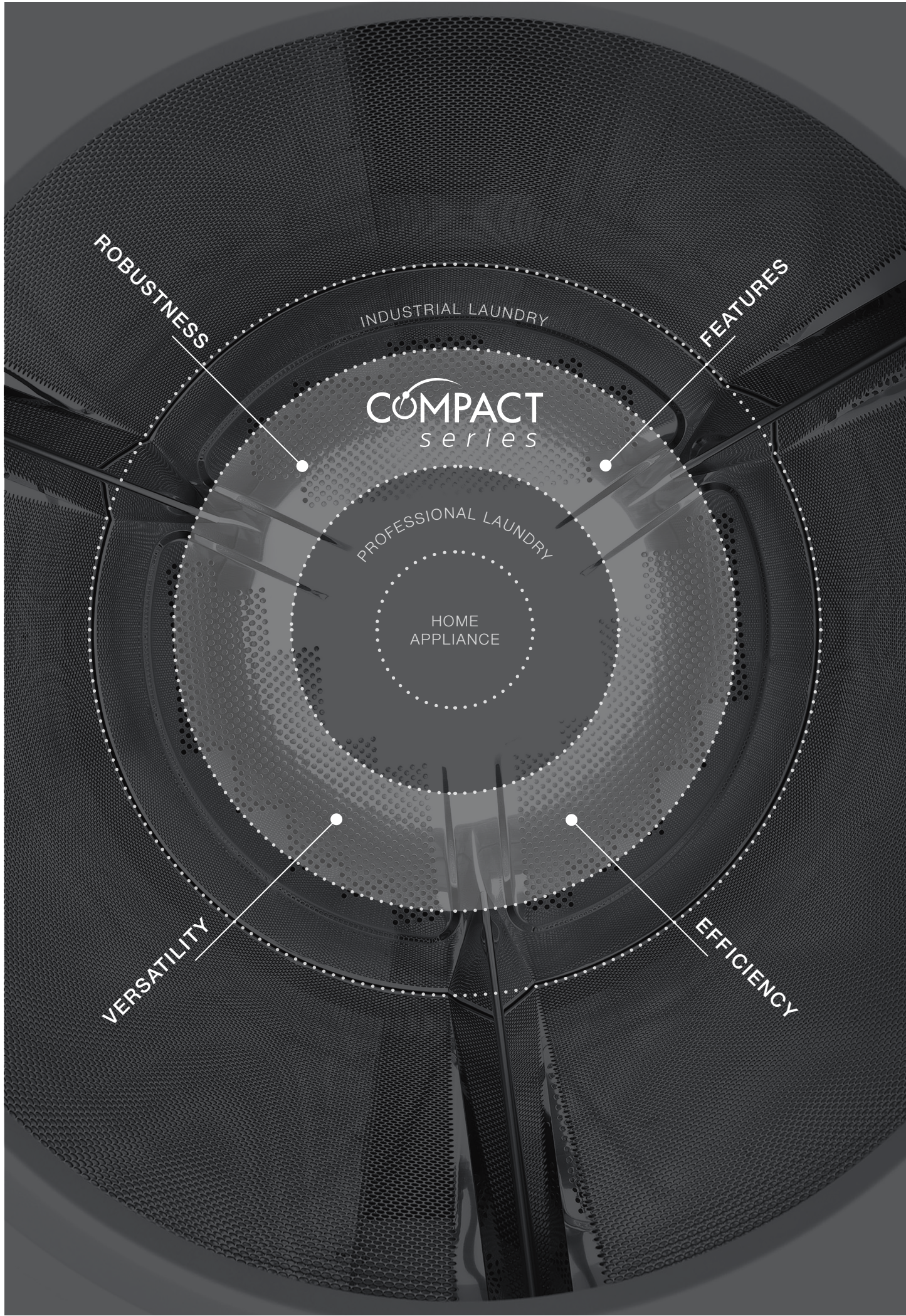
A NEW CONCEPT OF LAUNDRY.

At Fagor Industrial we offer the best answer to your every need. And we know how to adapt to the new demands that arise in the market.

This is how Compact was born, a new range of professional laundry products specifically designed for small installations (hairdressers, gyms, campsites, etc.) that require the same features and robustness as industrial laundry machines, but with greater versatility and a more compact size.

It is the concentrated washing power of Fagor Industrial.





ROBUSTNESS

INDUSTRIAL LAUNDRY

FEATURES

COMPACT
series

PROFESSIONAL LAUNDRY

HOME
APPLIANCE

VERSATILITY

EFFICIENCY

THE BEST ANSWER TO EACH OF YOUR NEEDS

OPL

BED & BREAKFAST

RURAL HOUSES AND LODGES

BEAUTY SALONS

CLINICS

CLEANING COMPANIES (MOPS)

NURSING HOME

GYMNASIUMS

NURSERIES

HOSTELS

LABORATORIES

HAIRDRESSERS

SMALL INDUSTRIES

SPAS



SELF-SERVICE

LODGES

APARTMENTS

CAMPSITES

COLLEGES, RESIDENCES AND

UNIVERSITIES

NEIGHBORHOOD ASSOCIATIONS

TRANSPORTABLE CONTAINERS

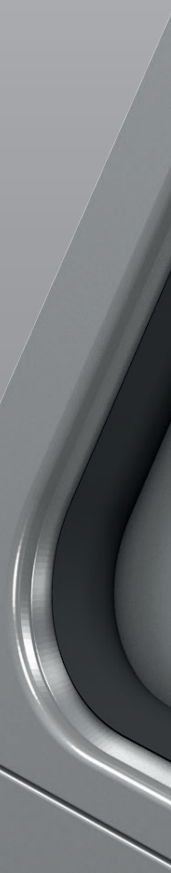
SELF-SERVICE LAUNDRIES



COMPACT
series

WASHING MACHINES

The new range of Compact washing machines offers performance equivalent to that of Industrial Laundry machines and superior to that offered by the rest of Professional Laundry solutions.





MORE FEATURES

01.

TOUCH PLUS CONTROL

New programmer with display (Touch Screen 4.3") TP2 touchscreen, fully programmable and very intuitive.

Allows you to create an indefinite number of programs (26 presets).

02.

DETERGENT DOSAGE SYSTEM

System with 8 automatic detergent dosing signals that is integrated as standard in all washing machines. In option 6 extra signals.

03.

IoT SOLUTION

Fagoremove is our new Connected Laundry IoT (Internet of Things) solution. A cloud based multiplatform and responsive application that allows you to manage your laundry from your pocket. No matter how many machines you own, this solution offers you several convenient possibilities.

04.

REMOTE DEVICE MANAGEMENT

Thanks to this solution, you can organize your connected devices as you wish. Get full status of the machines monitoring if machines are in stand-by, running, offline, booked or showing some error. You can also see the location of the different devices with a user friendly geo-map view. On the other hand, you just need to choose a machine and fully get connected so that you can:

- See real time program parameters.
- Remote desktop.
- Exchange information between with r-Washing (programs, price plans, RABC, statistics...)
- Update Software.



05.

r - WASHING

Fagor thinks about your comfort. For this reason, the IoT solutions allows to transfer and manage laundry programs and price plans, from your preferred device. You can also see machine error warnings, management of RABC and statistics, which are especially important for safety reasons. However, if wireless communication is not possible, all these features can be easily transferred through the USB port, which comes as standard in all models.

06.

MANAGE YOUR LAUNDRY BUSINESS

Thanks to **Fagoremove**, you can create your own shops, as many as you need to manage correctly your business. You can also create discount programs for your costumers.

07.

DASHBOARD

Monitorize your business at a glanze:

- Income per machine
- Program usage.
- Machine occupancy.
- Machine geo-localization.
- Error analytics.

08.

END USER

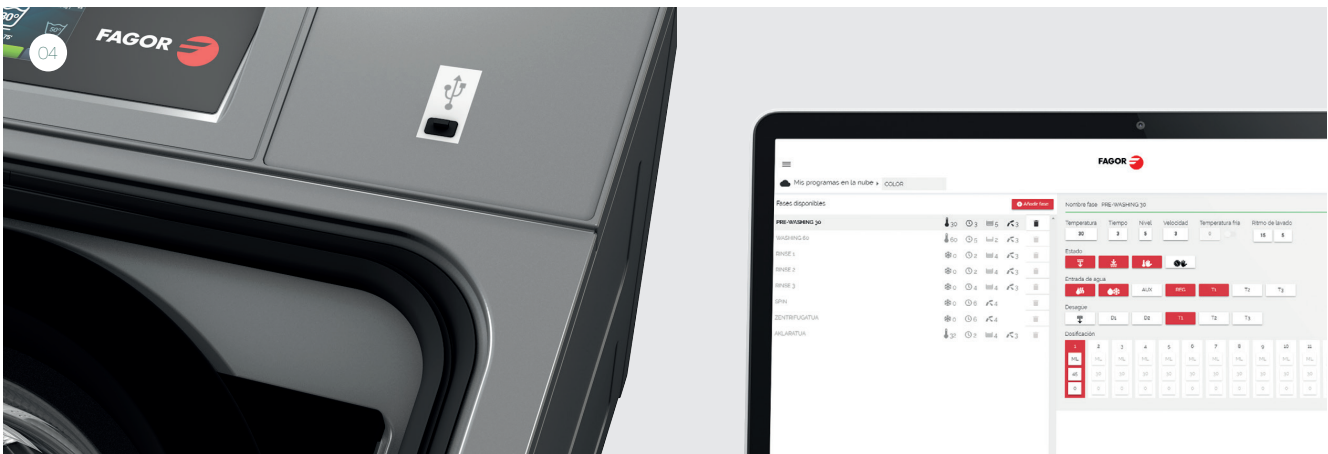
Users can also benefit from the advantages of Fagoremove, and can book and pay cashless, remotely, by scanning the QR code.

Moreover, the system notifies them when their clothes are ready.

09.

WASHING CYCLES

Reduced washing cycles. (Heating power 6 kW).



07.



MORE ROBUSTNESS

01.

SKINPLATE FURNITURE

Grey skinplate panels, stainless aesthetics, embedded front and side panels, elegant aesthetics, easy to clean and anti-footprints.

02.

STEEL AISI 304 IN ALL IMPORTANT PARTS

The tank, drum and shovels are made of AISI 304 stainless steel as in industrial washing machines. Higher quality and resistance to external agents, prevents premature oxidation, extension of the useful life and better quality.

03.

INDUSTRIAL COMPONENTS

Bearings, bearing housings, motor and frequency converter are equivalent to industrial machines.



04.

LARGE AND ROBUST DOOR

It has a robust aluminium door with the same lock as the industrial range. Easy loading and unloading of clothes, largest door diameter in the market in its segment (516 mm).

05.

NO MUFFLE

The washing machines have the same door seal used in the industrial range, instead of the muffle usually used in the sector.



MORE VERSATILITY

01.

CUSTOMISATION

Possibility of customizing the machines to the specific needs of each customer, starting from the available options and delivering them with these options already installed and verified from the factory.

02.

OPL ↔ SELF-SERVICE

The machines can be transformed from OPL to Self Service and vice versa from the TP2 control itself.

03.

STAND ALONE MACHINE ↔ COLUMN MACHINE

The standard model is easily installed in column.

A washing machine can be column mounted with a tumble dryer, even if ordered separately as stand-alone machines.

04.

ELECTRIC ↔ HOT WATER

An electric heating model can be easily transformed into a hot water model.



05.

DRAIN VALVE
↔ DRAIN PUMP

The machine with drain valve can be converted into a pump machine.

06.

MULTIPLE
SECTORS

The Compact range is suitable for many and various sectors, such as restaurants, gyms, campsites, apartments, dry cleaners...

07.

SPACE
SAVING

The range of compact washers and dryers have as a great virtue their reduced dimensions, taking into account their load capacity, and the possibility of being stackable, therefore they are a good solution for small spaces.

08.

WET
CLEANING

Fagor offers the most flexible solution in the market to implement a Wet-Cleaning solution.

Machines are flexible because both washers and dryers offer the possibility to create different phases per program with all customized parameters required by the specific detergent suppliers of the wet-cleaning industry.

The business proposal is flexible as well as Fagor has cooperated in advance with the most reputed chemical companies in the world and programs for specific detergents have been pre-tested. Therefore you can continue cooperating with your preferred detergent supplier: integrating with Fagor Laundry equipment will be immediate.



MORE EFFICIENCY

01.

OPTIMAL COMSUPTION

It allows two weighing systems; one manual, reporting the load inserted directly to the machine and the other intelligent, where the machine makes an estimate of the load at the beginning of each program.

On the other hand, the degree of savings can be set in three levels depending on the washing requirements.

02.

FACTOR G450

The high Factor G450 reduces residual moisture and therefore drying time.



03.

WATER RECOVERY TANK

Possibility of integrating a water recovery tank into a specially designed base. This option is managed from the TP2 control itself, where the user can recover the water from the required phase.

04.

IMBALANCE DETECTION SYSTEM

Through advanced technological development, and through the frequency converter, the washing machines detect the unbalance in their load prematurely, to carry out the best centrifugation. Greater softness of work (less noise) that allows the life of all its components to be extended. Reduction of washing times and energy savings.



PROFESSIONAL HIGH SPEED WASHING MACHINES



CHARACTERISTICS

- Floating washing machines with high centrifugation, without the need for anchoring to the floor.
- Detergent tray with 4 compartments.
- 2 standard water inlets.
- Equipped with frequency converter (standard) 50-60 Hz). Balancing system controlled by the same drive.
- Model with drain valve (V) and model with drain pump (P).
- Model with valve specially designed for washing mops.
- Includes levelling feet.
- CE and WRAS product certifications.

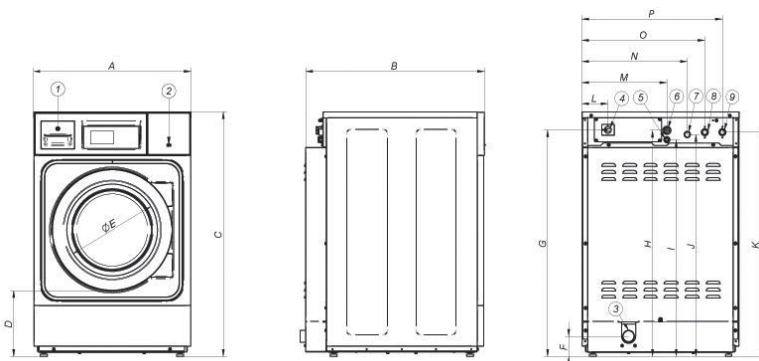
OPTIONS

- Double drain (valve model only).
- Drainage pump kit.
- Normally closed drain'NC'. In the event of a power failure, the water is kept in the tank.
- 6 extra signals for dosing: total of up to 14 available.
- Silicone gasket-door.
- Door with opposite opening.
- Delayed opening of the door due to power failure.
- Stainless steel cabinet AISI 304.

- Prepared for remote connections.
- (Wifi, Ethernet...)
- Base for easy access to the machine.
- Special base for mops (with filter) - Valve models only.
- Base and water recovery tank.
- Kits for self-service: Payment centre, file, purse.
- Voltage 110 1N 50/60 Hz.
- Voltage 440 3~ (No N) 50/60 Hz.

TECHNICAL DATA

	UNIT	LAP-08 TP2 V	LAP-08 TP2 P	LAP-TP2 10 V	LAP-10 TP2 P
DRUM					
Load capacity (KG) 1:9 / 1:10	Kg	9/8	9/8	11/10	11/10
Volume	l	80	80	100	100
Diameter	mm	532	532	532	532
Depth	mm	360	360	425	425
TECHNICAL DATA					
Speed of washing - Speed of centrifugation	r.p.m.	50/ 1,250	50/ 1,250	50/ 1,250	50/ 1,250
"G" factor	-	450	450	450	450
Self-service version	-	Yes	Yes	Yes	Yes
Double drain	-	Yes	No	Yes	No
Weighing system / Dump system	-	No	No	No	No
DOOR					
Door centre high - Door base high	mm	537/280	537/280	537/280	537/280
Diameter	mm	373	373	373	373
DYNAMIC FORCE					
Static load	KN	1.4	1.4	1.5	1.5
Maximum dynamic load	KN	0.5	0.5	0.6	0.6
Maximum vertical load	KN	0.64	0.64	0.75	0.75
Maximum revolutions	r.p.m.	1,250	1,250	1,250	1,250
Dynamic load frequency	-	18.33	18.33	18.33	18.33
POWER					
Motor	kW	0.75	0.75	0.75	0.75
Electric Heating mod.	kW	6	6	6	6
Hot water heating	kW	0	0	0	0
Maximum elec. power	kW	6.25	6.25	6.25	6.25
Maximum power Hot water mod.	kW	0.75	0.75	0.75	0.75
Maximum power Steam mod.	kW	No	No	No	No
CONNECTIONS					
Water inlet	inch	3/4"	3/4"	3/4"	3/4"
Drain	mm/inch	2"	1" (Pump))	2"	1" (Pump))
DIMENSIONS / DIMENSIONS WITH PACKAGING					
Width	mm	680/710	680/710	680/710	680/710
Depth	mm	698/832	698/832	772/832	772/832
Height	mm	1,040/1,130	1,040/1,130	1,040/1,130	1,040/1,130
Net weight - Gross weight	kg	140/150	140/150	140/150	150/160



01. Soap dish
02. USB port
03. Drain Valve / Drain Pump
04. Main switch
05. Electrical connection liquid soap pumps
06. Electrical connection
07. Inlet for liquid soap
08. Cold water inlet
09. Hot water inlet
10. Base height 389 mm

	A	B	C	D	E	F	G	H	I	J	K	L	M	N	O	P	Q
LAP-08 V	680	698	1040	278	373	86	964	962	922	944	954	110	366	453	528	603	199
LAP-08 P	680	698	1040	278	373	-	964	962	922	944	954	110	366	453	528	603	-
LAP-10 V	680	772	1040	278	373	86	964	962	922	944	954	110	366	453	528	603	199
LAP-10 P	680	772	1040	278	373	-	964	962	922	944	954	110	366	453	528	603	-



COMPACT
series

TUMBLE DRYERS

—

The new range of Compact tumble dryers are the perfect match for Fagor's professional washing machines, offering a series of equally versatile and robust industrial features that guarantee a very competitive tumble dryer with truly efficient drying cycles.



MORE FEATURES

01.

CONTROLS

Two types of controls, touch control and simple micro.

TP2: Touch screen 4,3". Fully programmable. Easy to use, intuitive.

ELECTRONIC CONTROL: Selection of temperature and time. Easy to use.

02.

i-DRYING

Fagor thinks about your comfort. For this reason, the IoT solutions allows to transfer and manage laundry programs and price plans, from your preferred device. You can also see machine error warnings, management of RABC and statistics, which are especially important for safety reasons. However, if wireless communication is not possible, all these features can be easily transferred through the USB port, which comes as standard in all models.

03.

IoT SOLUTION

Fagoremate is our new Connected Laundry IoT (Internet of Things) solution. A cloud based multiplatform and responsive application that allows you to manage your laundry from your pocket. No matter how many machines you own, this solution offers you several convenient possibilities.

04.

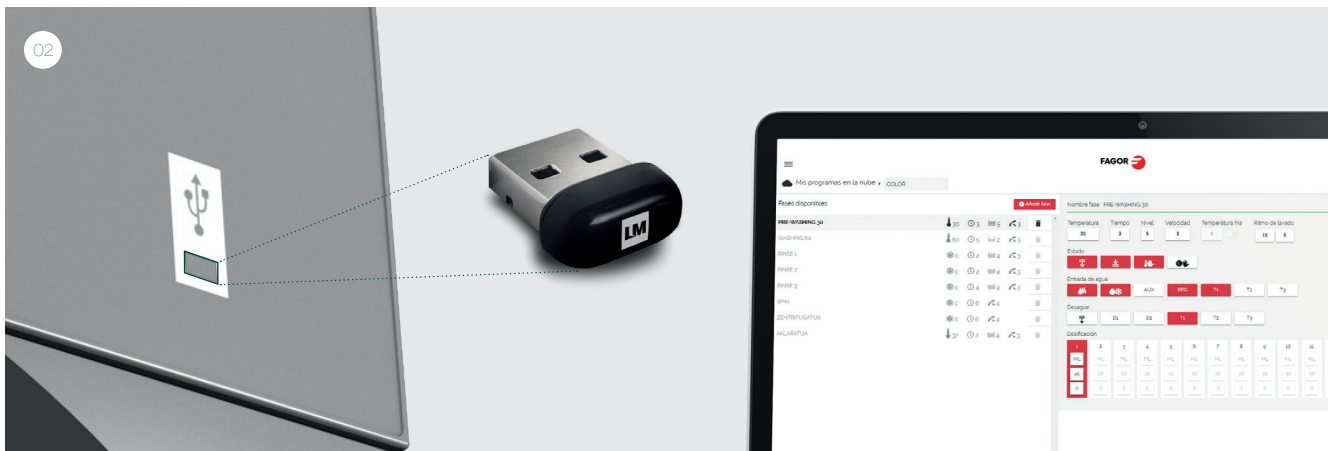
REDUCED DRYING TIMES

Less than 45 minutes. 6'75 kW heating. Option 4.5 kW.

05.

MULTIPLE OPTIONS

Bases, humidity sensor, etc...



MORE ROBUSTNESS

01.

LARGE AND ROBUST DOOR

It has a robust aluminium door with the same closure and door seal used in the industrial range. Easy loading and unloading of clothes. Largest door diameter in the market in its segment (552 mm).

02.

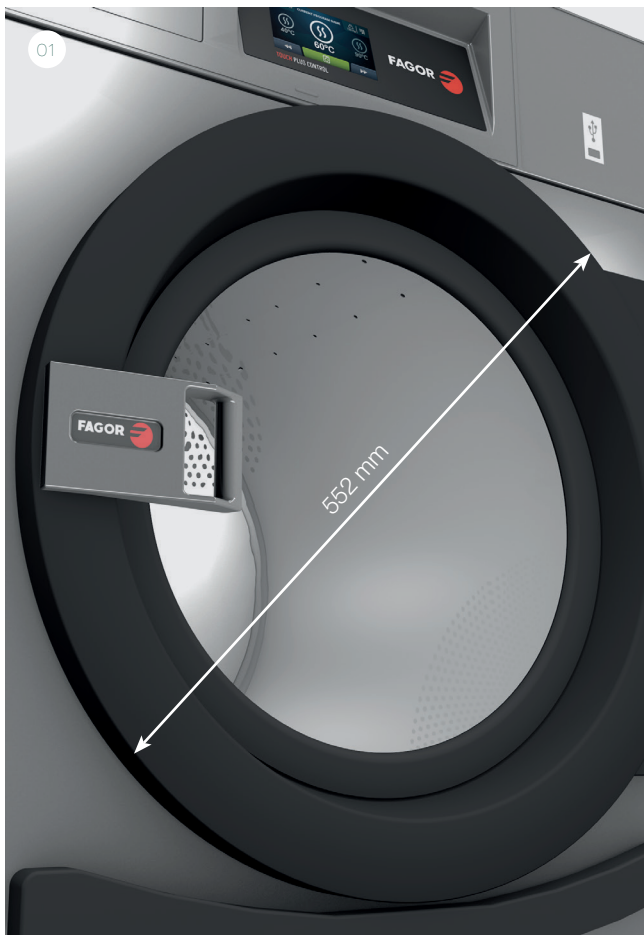
INDUSTRIAL COMPONENTS

It has a large industrial filter, industrial fan with a strong air flow.

03.

ROBUST CONSTRUCTION OF STRUCTURE AND FURNITURE

Grey skinplate panels, stainless and elegant aesthetics. Embedded front and side panels.



MORE VERSATILITY

01.

OPL ↔ SELF-SERVICE

Standard model configurable as OPL, self-service purse, central payments, etc.

02.

WASHING MACHINE AND COLUMN TUMBLE DRYER

They can be installed in column over the washing machine or other tumble dryer.

03.

REMOTE CONTROL HOLDER

Transformable remote control holder at the bottom part. Improves ergonomics when using the washing machine and column tumble dryer.

04.

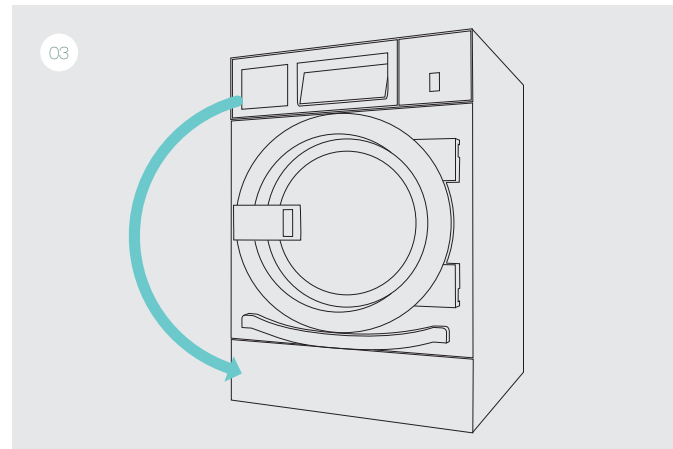
MULTIPLE USES

Renting, hotels, self-service, mops, gymnasiums, etc.

05.

SPACE SAVING

The range of compact washers and dryers have as a great virtue their reduced dimensions, taking into account their load capacity, and the possibility of being stackable, therefore they are a good solution for small spaces.



MORE EFFICIENCY

01.

HUMIDITY SENSOR OPTION

Optional humidity control on TP2 models.

02.

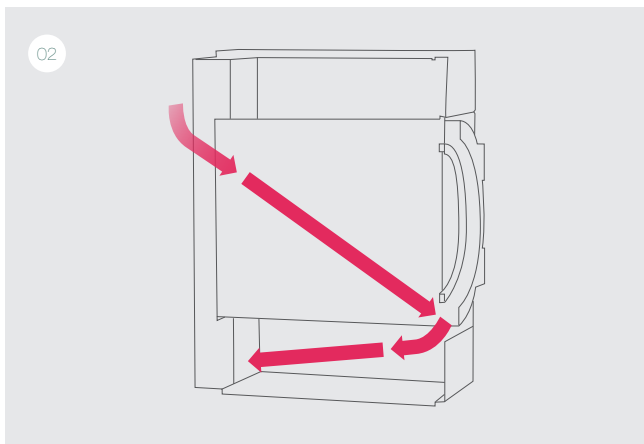
OPTIMISED AIRFLOW

Increases the efficiency of the entire drying process due to improved airflow inside the drum.

03.

WASTE FILTER

The filter is a drawer, not in the door.



PROFESSIONAL TUMBLE DRYERS



CHARACTERISTICS

- Professional tumble dryer of 8 and 10 kg of capacity.
- Robust construction, grey skinplate panels.
- Aluminium industrial door with large diameter.
- Models with TP2 Display Control 4"3" programmable touchscreen. Convertible for self-service.
- WET CLEANING: available with the TP2 programmer to create the best programs for delicate garments. Adjustable temperatures (drum input and output) and create programs in phases.
- Models with digital programmer M also convertible for self-service.

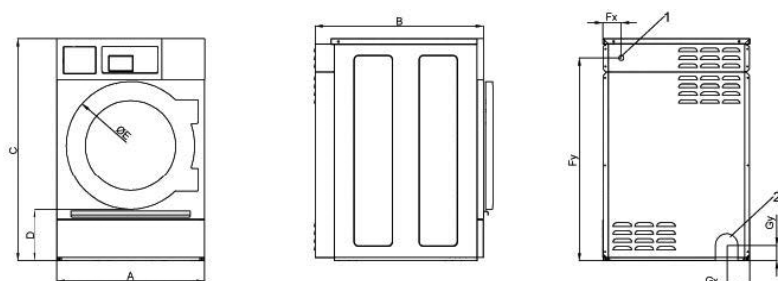
- USB port for programming, importing programs, monitoring and managing with the TP2.
- Versatile and easy to set up for self-service.
- Stackable on top of the washing machine or tumble dryer with the programmer on the underside, (between the two drums).
- Large drawer filter, not on the door.
- Electric heating with two possible configurations: 4.5 or 6.75 kW.
- Easy access to components for easy maintenance.
- Voltage 230V I.

OPTIONS

- Versatile model convertible to self-service.
- Stackable option on top of the washing machine or other tumble dryer by changing the control to the bottom of the drum.
- AISI 304 stainless steel panels.
- Humidity control on TP2 models.
- Base for more ergonomics.
- Communication kit in TP2 model.
- Other voltages and frequencies: 110V, 60 Hz.

TECHNICAL DATA

	UNIT	SRP-08 TP2	SRP-08 M	SRP-10 TP2	SRP-10 M
CAPACITY AND DRUM					
Capacity	Kg	8	8	10	10
Volume	l	160	160	200	200
Drum diameter	mm	590	590	590	590
Drum depth	mm	585	585	590	590
DOOR					
Centre height charging hole	mm	545	545	545	545
Base height charging hole	mm	250	250	250	250
Door diameter	mm	588	588	588	588
GENERAL DATA					
TP2 Control	-	4,3" touch screen	ELECTRONIC	4,3" touch screen	ELECTRONIC
USB connection	-	Yes	No	Yes	No
Construction	-	Skinplate panels	Skinplate panels	Skinplate panels	Skinplate panels
Base	-	OPC	OPC	OPC	OPC
Self-service version	-	Yes	Yes	Yes	Yes
POWER					
Motor	kW	0,37	0,37	0,37	0,37
Electric heating	kW	6,75	6,75	6,75	6,75
CONNECTIONS					
Smoke evacuation	mm	100	100	100	100
Air flow	m ³ /hour	No	No	No	No
DIMENSIONS / DIMENSIONS WITH PACKAGING					
Width	mm	680 / 710	680 / 710	680 / 710	680 / 710
Depth	mm	698 / 832	698 / 832	772 / 832	772 / 832
Height	mm	1040 / 1130	1040 / 1130	1040 / 1130	1040 / 1130
Net weight - Gross weight	kg	60 / 65	60 / 65	65 / 70	65 / 70



- 01. Electric connection
- 02. Exhaust outlet

	A	B	C	D	E	Fx	Fy	Gx	Gy
SRP-8	680	698	1040	250	588	85	950	108	90
SRP-10	680	772	1040	250	588	85	950	108	90



FAGOR INDUSTRIAL S. COOP.
Santxolopetegi auzoa, 22
20560 Oñati, Gipuzkoa (Spain)
T. (+34) 943 71 80 30
F. (+34) 943 71 81 81
info@fagorindustrial.com

www.fagorindustrial.com



ONNERA GROUP

12158679-2018-1